



WIFI-Link™ Technologies Inc.

歲海尼可網路科技有限公司

WEB: <http://www.wifi-link.com.tw/> TEL: 06-2523801 FAX: 06-2526033

11dBi 指向增益天線 (4G)+3 公尺線材 SMA

WLPA-1726-11-3M

APPLICATIONS AND FEATURES

Applications:

- 698~960MHz-1.71~2.7 GHz ISM Band
- LTE700 / Cellular / PCS / AWS / MDS and global
- GSM900 / GSM1800 / UMTS / LTE2600 bands
- Directional and multipoint applications
- Public Wireless Hotspot
- Wi-Fi, RFID
- Wireless Video Systems

Features :

- RoHS Compliant
- The Weight is light
- Heavy Duty mounting
- Superior Performance
- Good appearance design
- Installed for vertical or horizontal polarization



SPECIFICATIONS:

Electrical Specifications

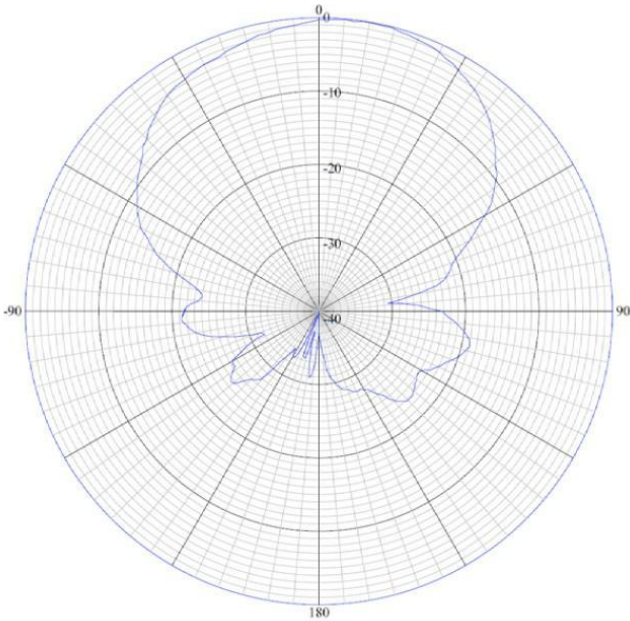
Frequency Range	698~960MHz 1.71~2.7 GHz
V.S.W.R	≤ 1.8
Return Loss	≥ -14db
Antenna Type	PCB patch
Gain	698~960MHz :9dBi 1.71~2.7 GHz :11dBi
Polarization	Vertical
Maximum Power	100W
Horizontal Beam-with	70°
Vertical Beam-with	55°
Impedance	50Ω

Mechanical Specifications

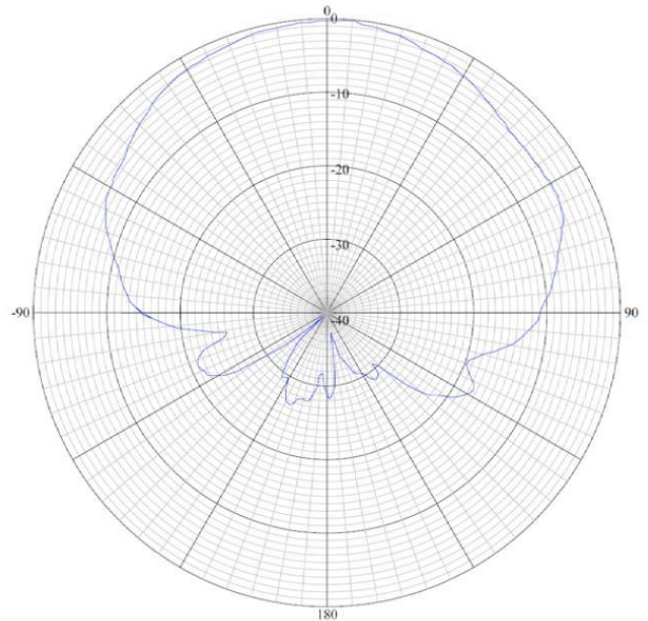
Size	L210xW180
Weight	920g
Wind Survival	> 150 MPH
Radome Material	ABS+UV resistance
Clamps	Multiple options
Mounting	Multiple options
Operating Temperature	-40°C to +70°C
Connector	SMA MALE
Cable	3m

Antenna Horizontal Pattern

Vertical

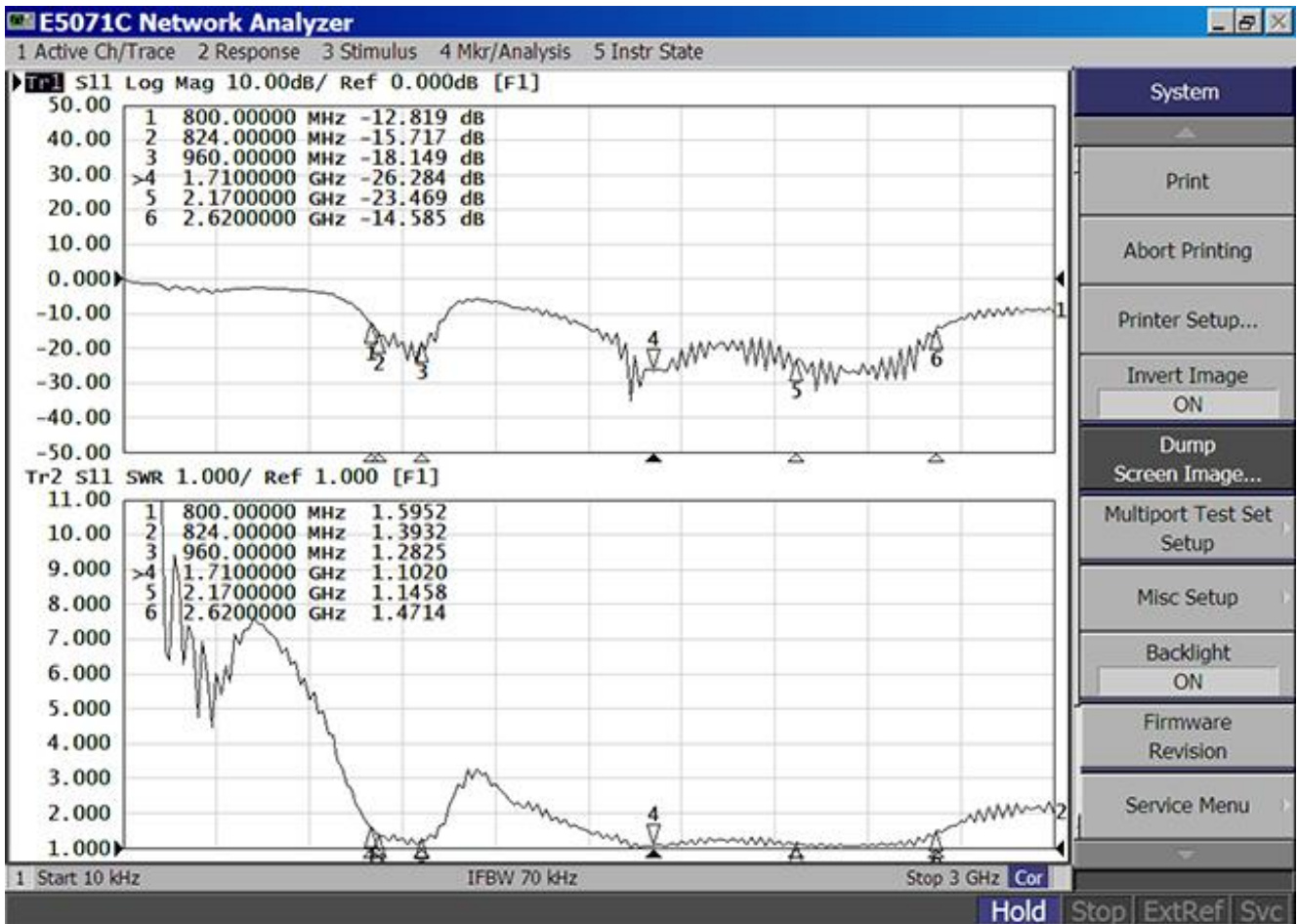


Horizontal

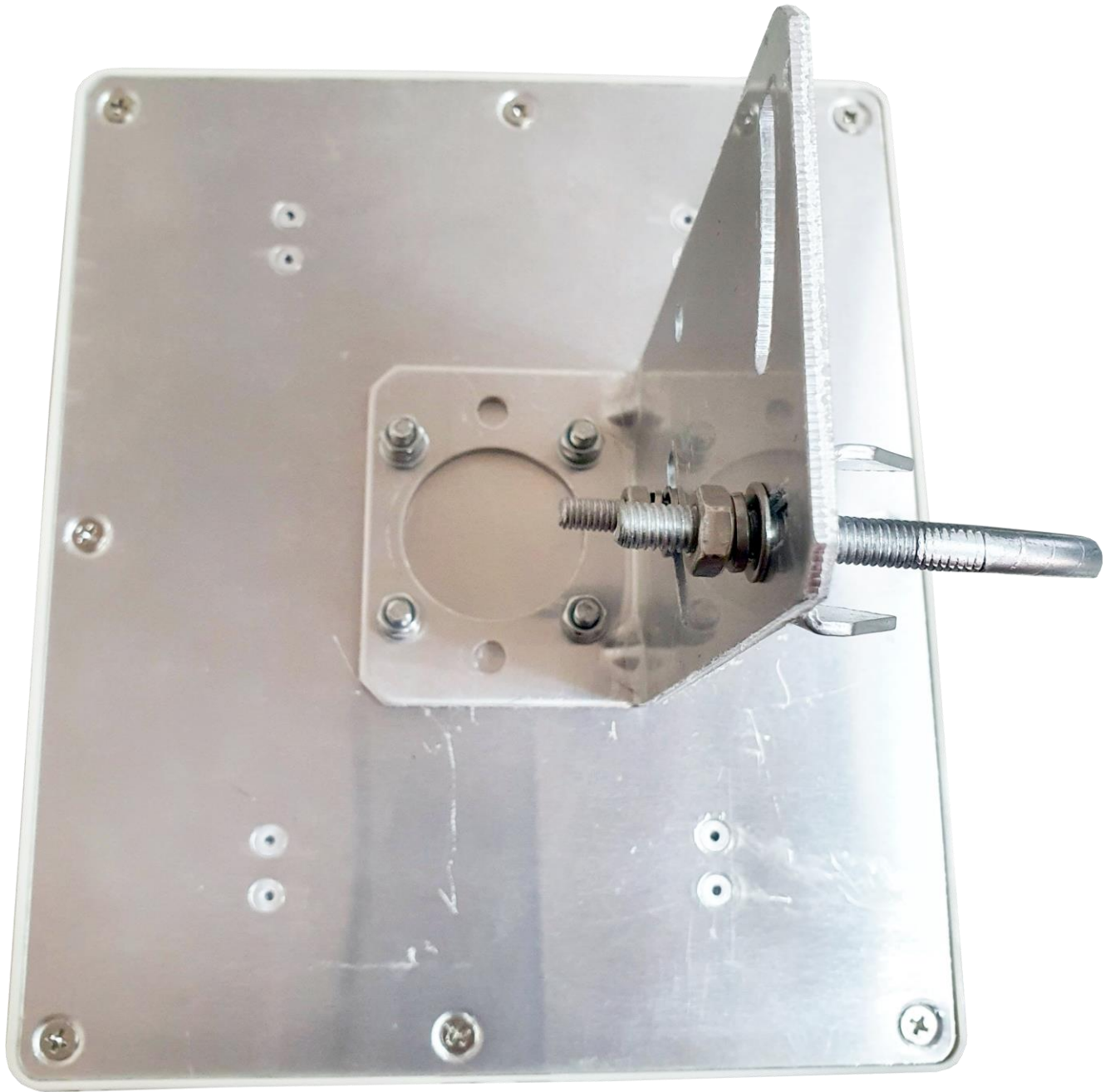


TESTING REPORT

V.S.W.R



WLPA-1726-11-3M



WIFI-Link™ Technologies Inc.

歲海尼可網路科技有限公司

WEB:<http://www.wifi-link.com.tw/> TEL:06-2523801 FAX:06-2526033